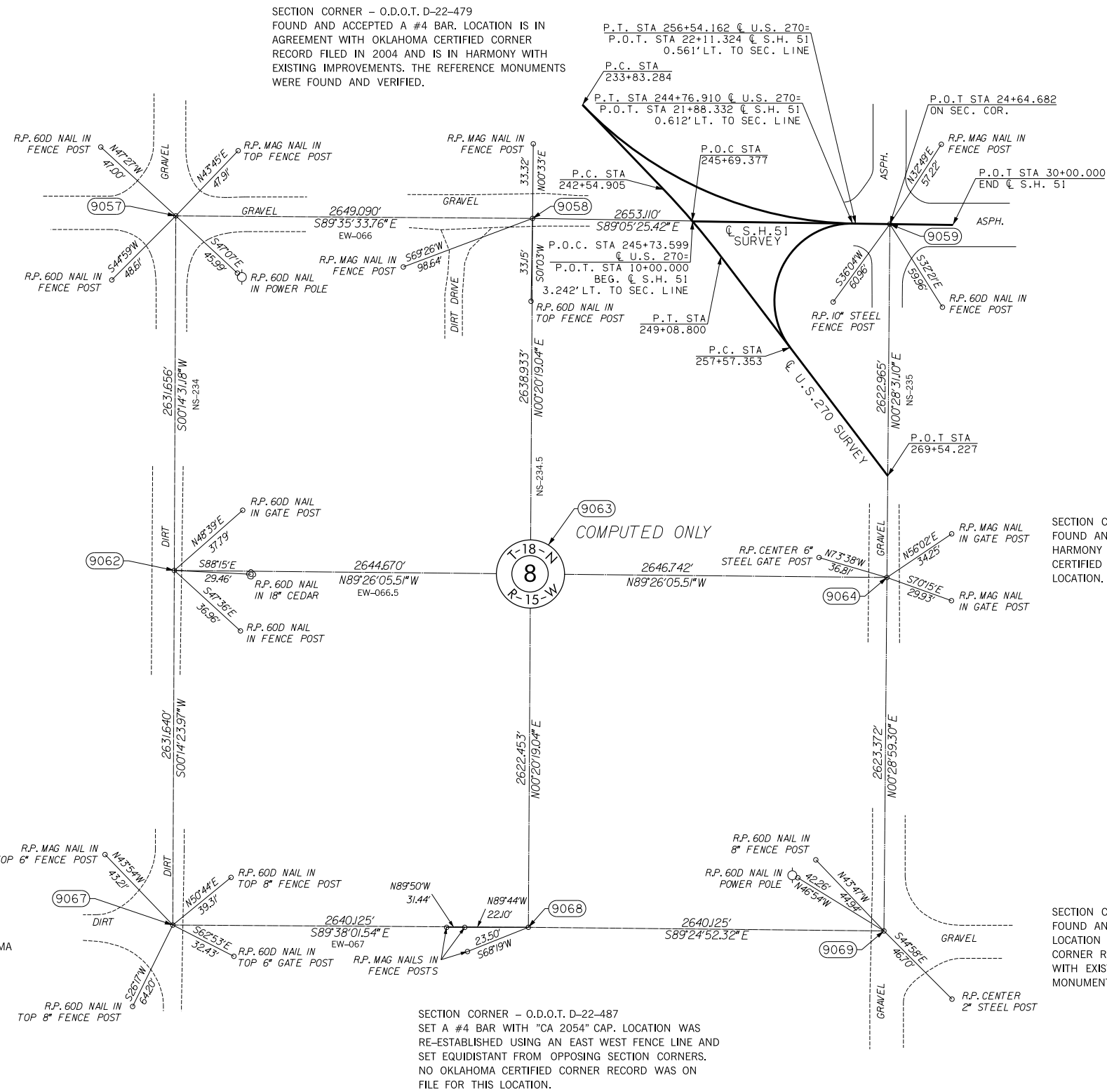


SECTION CORNER - O.D.O.T. D-22-478
 FOUND AND ACCEPTED A #4 BAR. LOCATION IS IN AGREEMENT WITH OKLAHOMA CERTIFIED CORNER RECORD FILED IN 2010 AND IS IN HARMONY WITH EXISTING IMPROVEMENTS. THE REFERENCE MONUMENTS WERE FOUND AND VERIFIED.

SECTION CORNER - O.D.O.T. D-22-483
 FOUND AND ACCEPTED A #4 BAR. NO OKLAHOMA CERTIFIED CORNER RECORDS WERE FILED FOR THIS LOCATION.

SECTION CORNER - O.D.O.T. D-22-486
 FOUND AND ACCEPTED A #4 BAR. LOCATION IS IN HARMONY WITH EXISTING IMPROVEMENTS. NO OKLAHOMA CERTIFIED CORNER RECORD WAS ON FILE FOR THIS LOCATION.



OKLAHOMA DEPARTMENT OF TRANSPORTATION SURVEY DIVISION			
PLS	KH		
DRAWN	CF,SK		
CHECKED	KH		
APPROVED	KH		
CREW	JH,SA,BH,DR	SWO 4600 (1)	PROJECT NO. 17671(34) SHEET NO. S33